

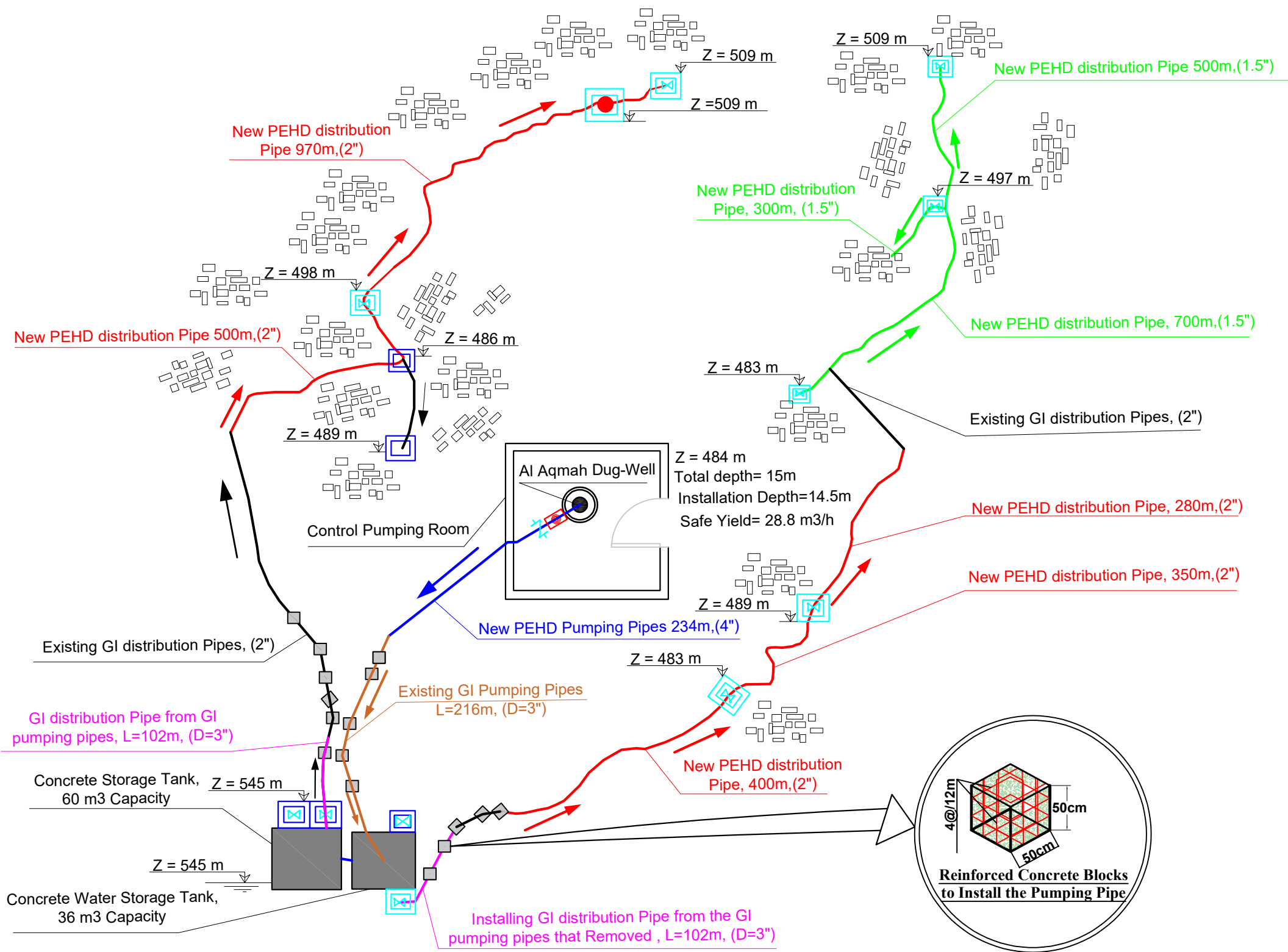
Annex 5 - LOT 1



ECHO3606 PROJECT-AL Aqmah WELL

ITM	GENERAL PLAN
DRWG	SIY-Mukha-ECHO3606-2025
DATE	Aug 2025
Draw	Aiman Ahmed
Reviewed	Wathiq Al Asharafi
Checked	Moe Thandar Win
Approved	Kuder Ajaj
Scale	Not to scale
Drawing No.	1 (Total sheets are 3)
	All Dimensions in M&MM

New PEHD Pumping Pipes(4")	
New PEHD Distribution Pipes(2")	
GI distribution Pipe from the GI pumping pipes that Removed	
New PEHD Distribution Pipes(1.5")	
Existing GI Pumping Pipes(3")	
Existing GI Distribution Pipes(2")	
Air Valve	
New Valves Chamber	
Non Return Valve	
Water Gate Valve	
Water Flow-Meter	
Concrete supporting stand	
Rehabilitation Inspection Room	

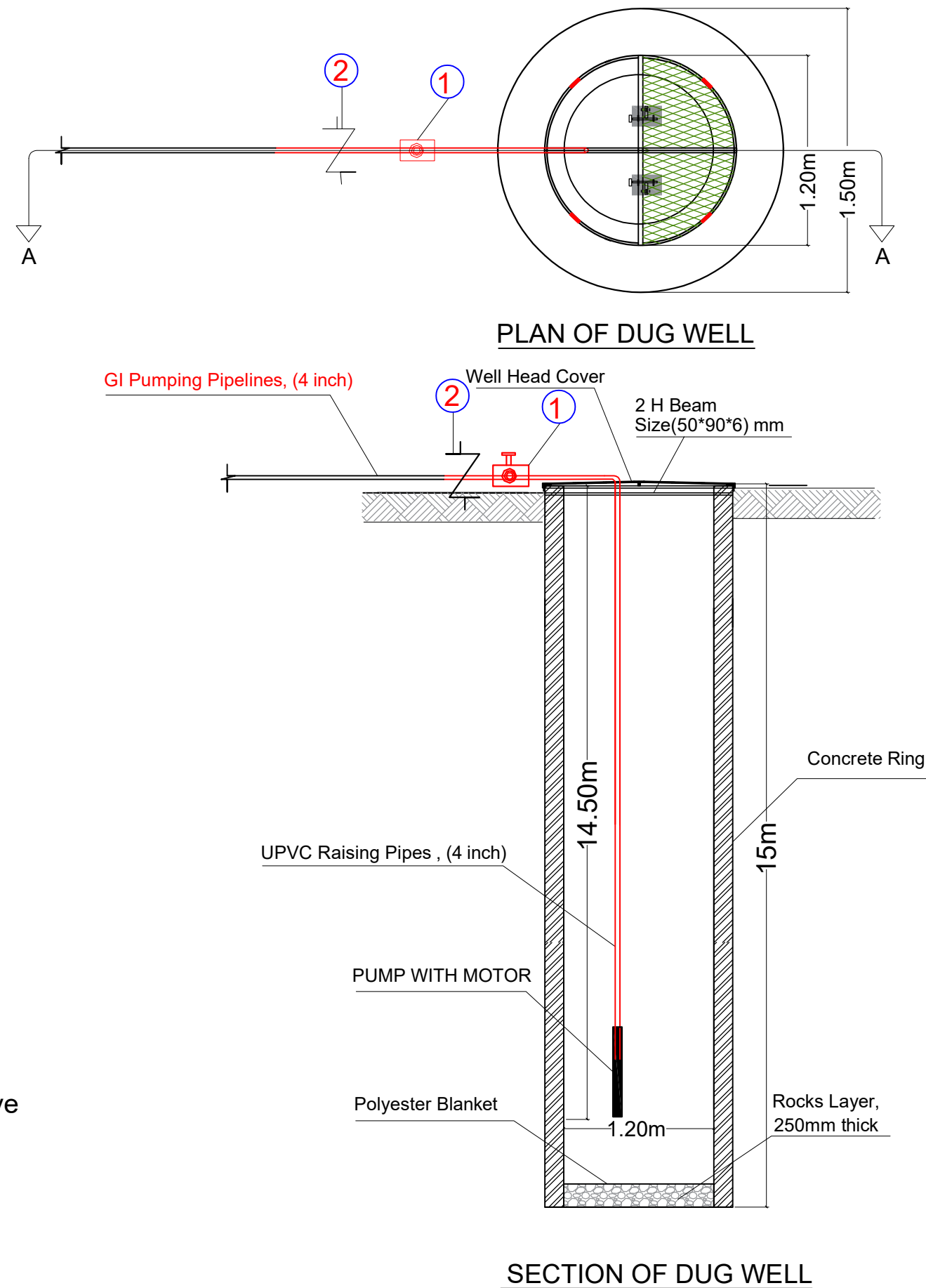


## ECHO 3606 PROJECT - Al Aqmah WELL

ITM	PLAN & SECTION OF DUG WELL
DRWG	SIY-Mukha-ECHO3606-2025
DATE	Aug 2025
Draw	Aiman Ahmed
Reviewed	Wathiq Al Asharafi
Checked	Moe Thandar Win
Approved	Kuder Ajaj
Scale	Not to scale
Drawing No.	2 (Total sheets are 3)
	All Dimensions in M&MM

### General Notes:

This drawing is showing plan and section of Al Aqmah dug well including the details for well and installation depth of Submersible Pump that will be implementation for Al Aqmah water system. In addition to Water Flow-meter, and Non-return Valve.





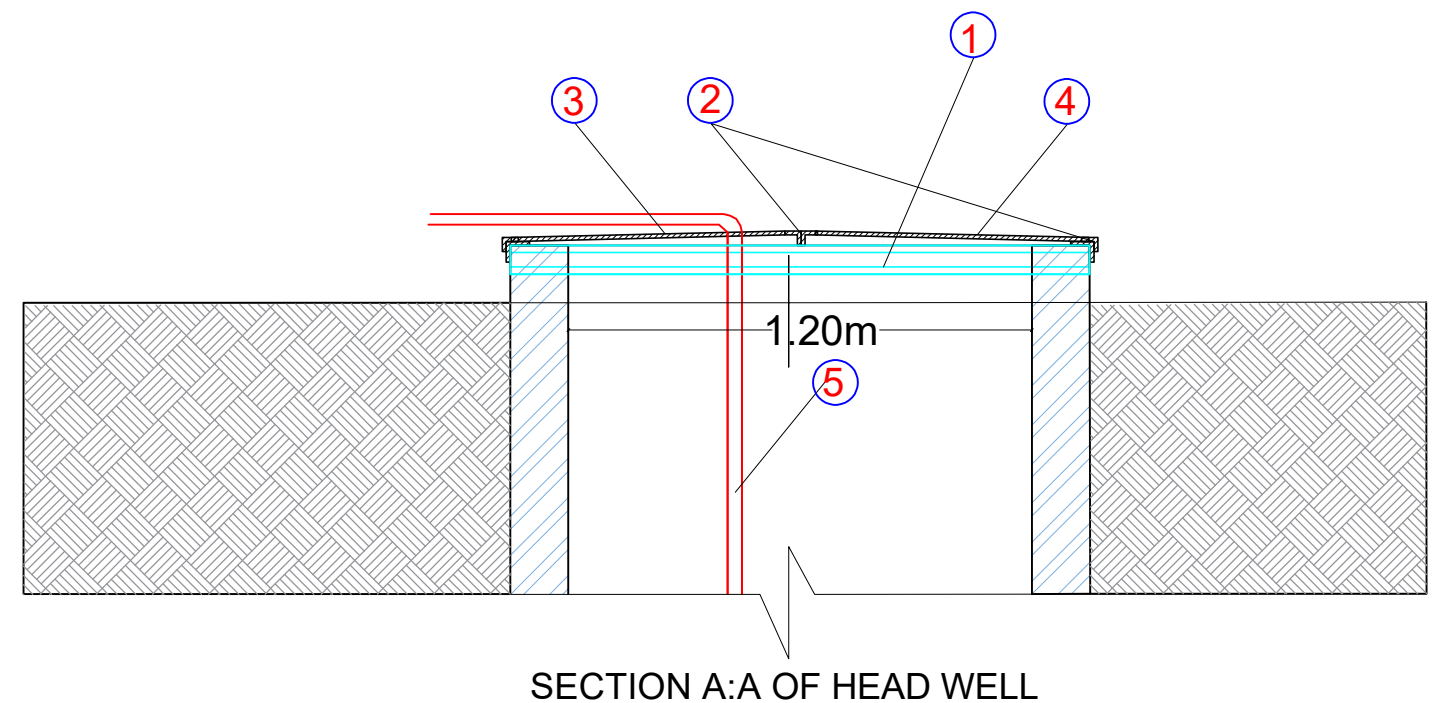
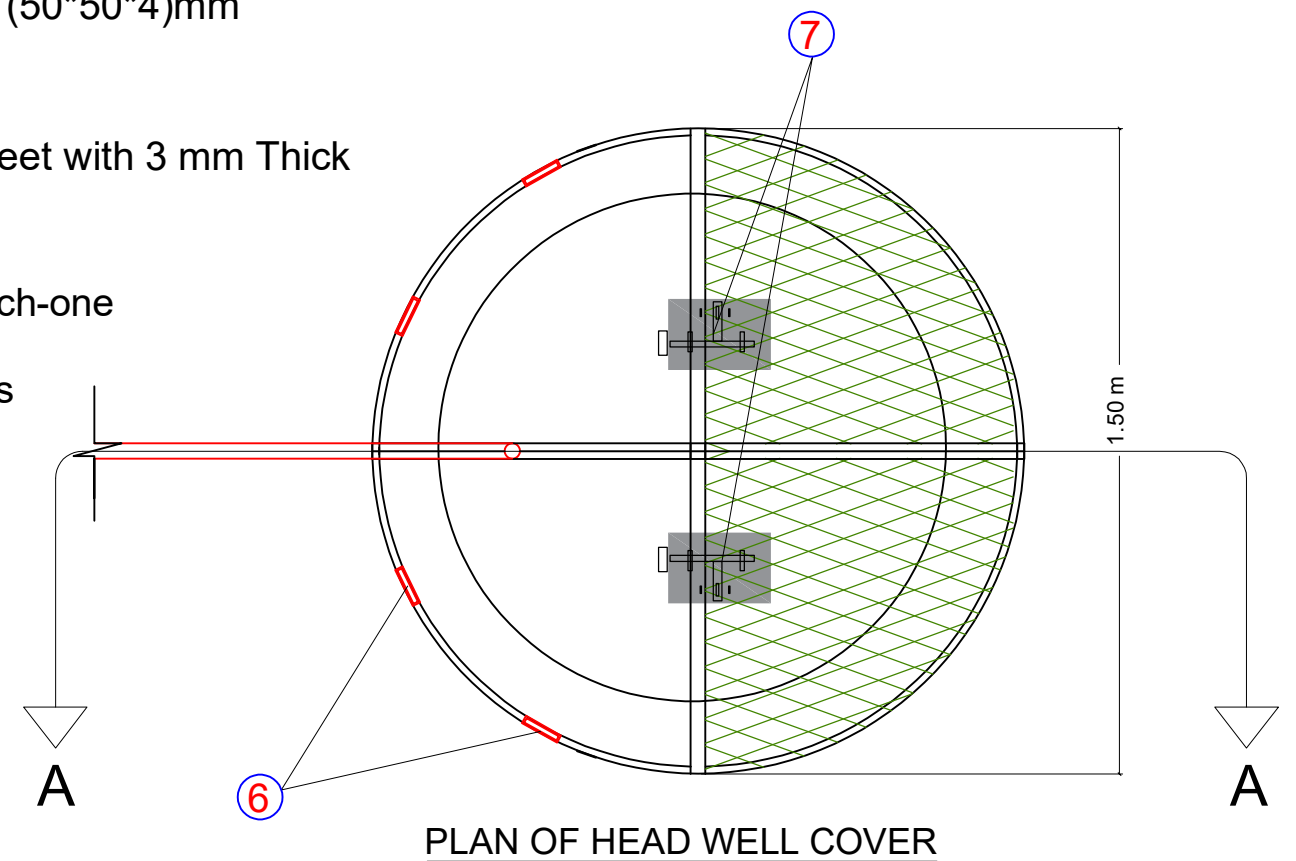
ECHO3606PROJECT-ALAQmah WELL

ITM	HEAD WELL COVER
DRWG	SIY-Mukha-ECHO3606-2025
DATE	Aug 2025
Draw	Aiman Ahmed
Reviewed	Wathiq Al Asharafi
Checked	Moe Thandar Win
Approved	WaSH Coordinator
Scale	Not to scale
Drawing No.	3 (Total sheets are 3)
	All Dimensions in M&MM

#### General Notes:

This drawing is showing the elements and details of the head well cover that will implementation for Al Aaqmah water system

- ① 2 H Beam size(50\*90\*6) mm
- ② Cover's Frame from Steel Angles Size (50\*50\*4)mm
- ③ Fixed Part for Body of the Well
- ④ Half fixed of Cover, from Steel Mish Sheet with 3 mm Thick
- ⑤ GI Raising Pipe , (4 inch)
- ⑥ 2 Hinges for 2 Moving Quarter, 1 for Each-one
- ⑦ 2 Latches for Close the Moving Quarters



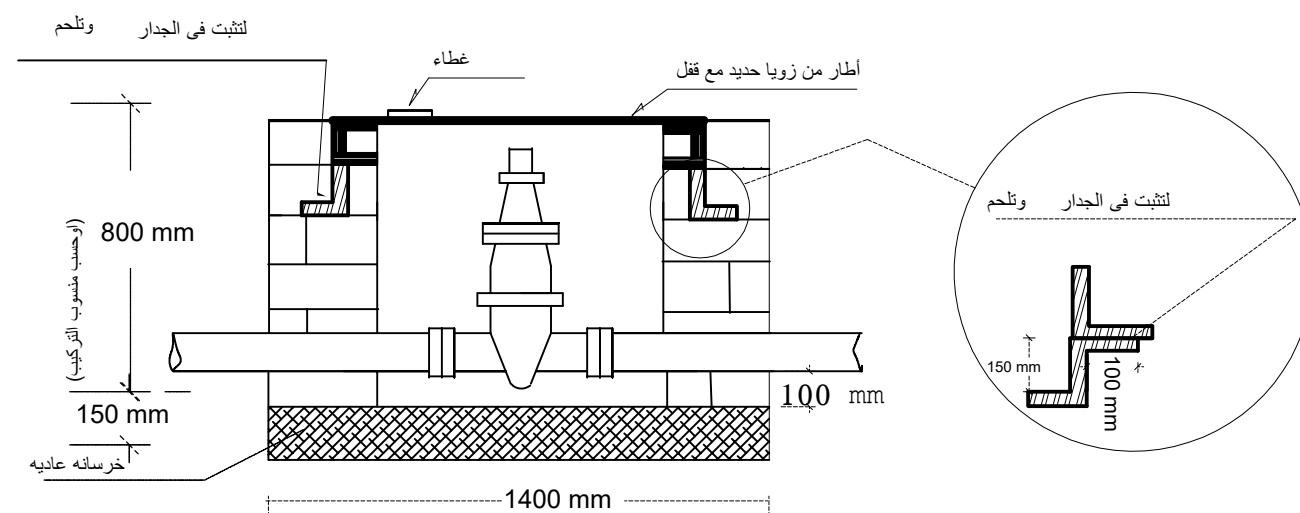
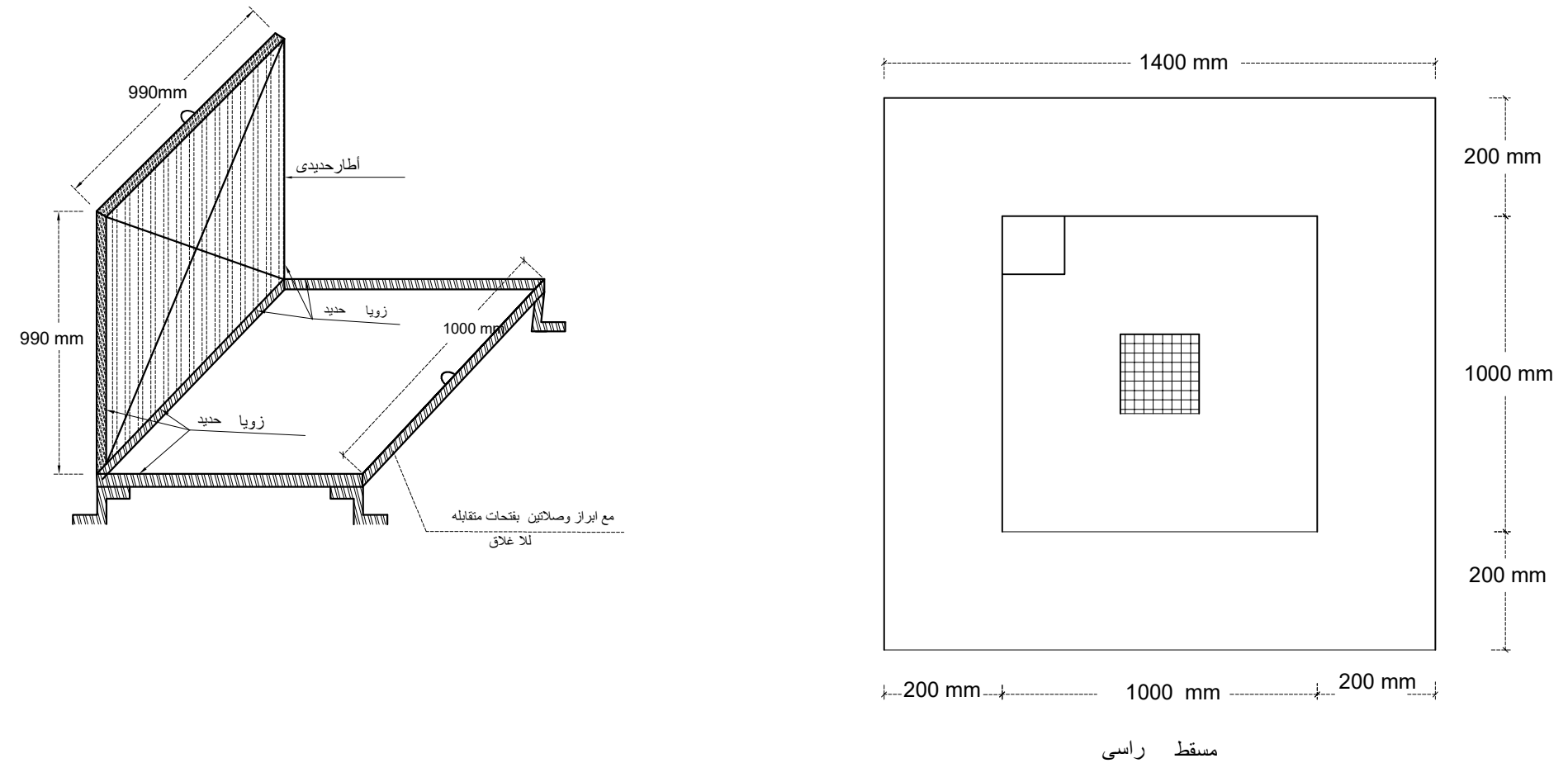
**PROJECT Name:**  
ECHO 3606PROJECT -Al Aqmah Solar  
System  
in Mawza District -Taiz Governorate

### Inspection Manhole Details

Designed by :	Sami & Aiman
Revised by :	Wathiq Al Asharafi
Checked by :	Moe Thandar Win
approved by :	Kuder Ajaj

**All of the mentioned above  
must to be approved from  
the Engineer supervisor**

**If any items isn't clear  
here it mentioned in  
BOQs**



**Inspection Manhole (1000×1000×800)mm**

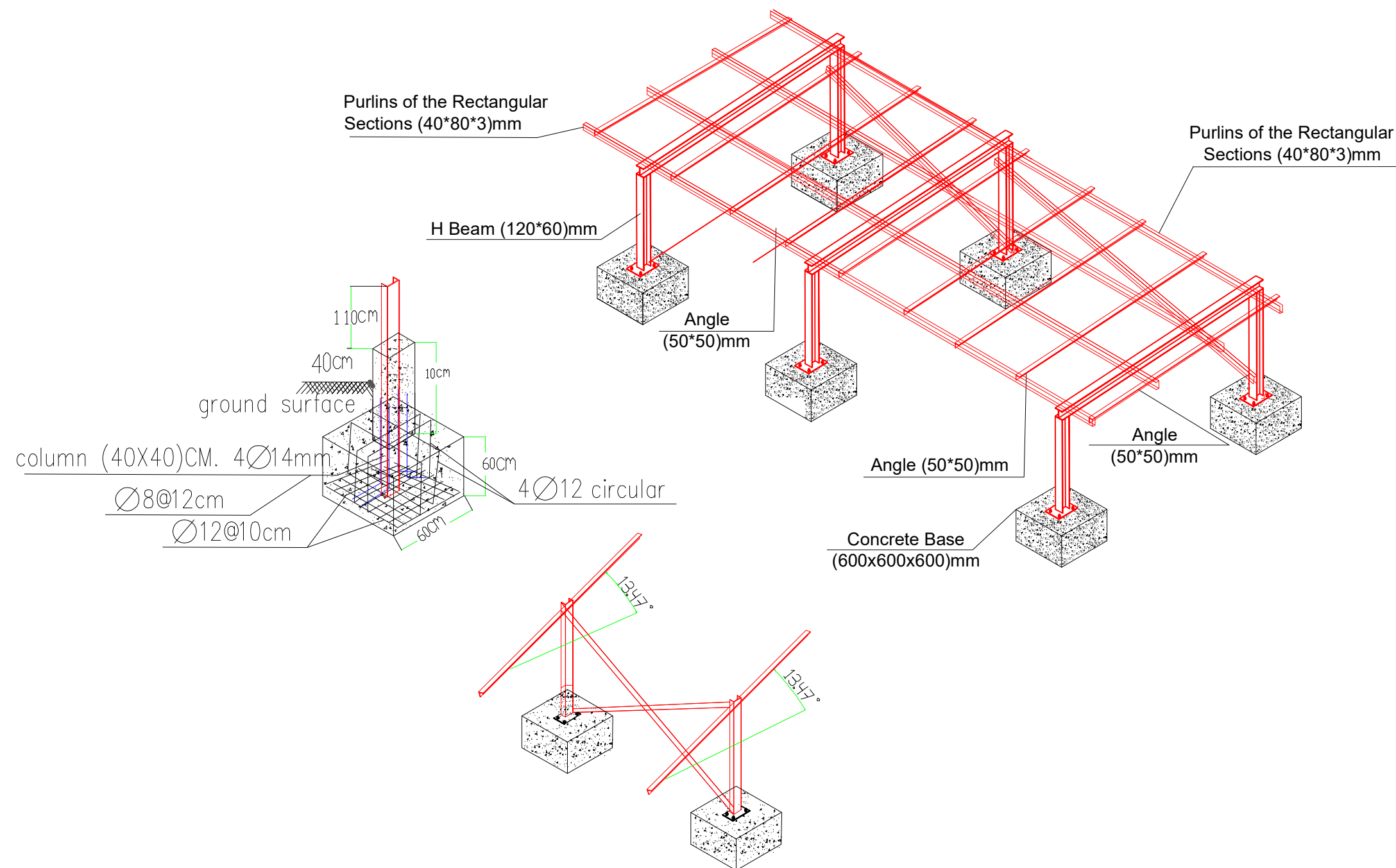
**PROJECT Name:**  
**ECHO 3606PROJECT -Al Aqmah Solar**  
**System**  
**in Mawza District -Taiz Governorate**

**ECHO 3606 PROJECT-Al Aqmah WELL**

ITM	Bases of Panels
DRWG	SIY-Mukha-ECHO3606-2025
DATE	Aug 2025
Draw	Aiman Ahmed
Reviewed	Wathiq Al Asharafi
Checked	Moe Thandar Win
Approved	WaSH Coordinator/ Kuder Ajaj
Scale	Not to scale
Drawing No.	1 (Total sheets are 3)
	All Dimensions in M&MM

**All of the mentioned above**  
**must to be approved from the**  
**Engineer supervisor**

**If any items isn't clear here**  
**it mentioned in BOQs**





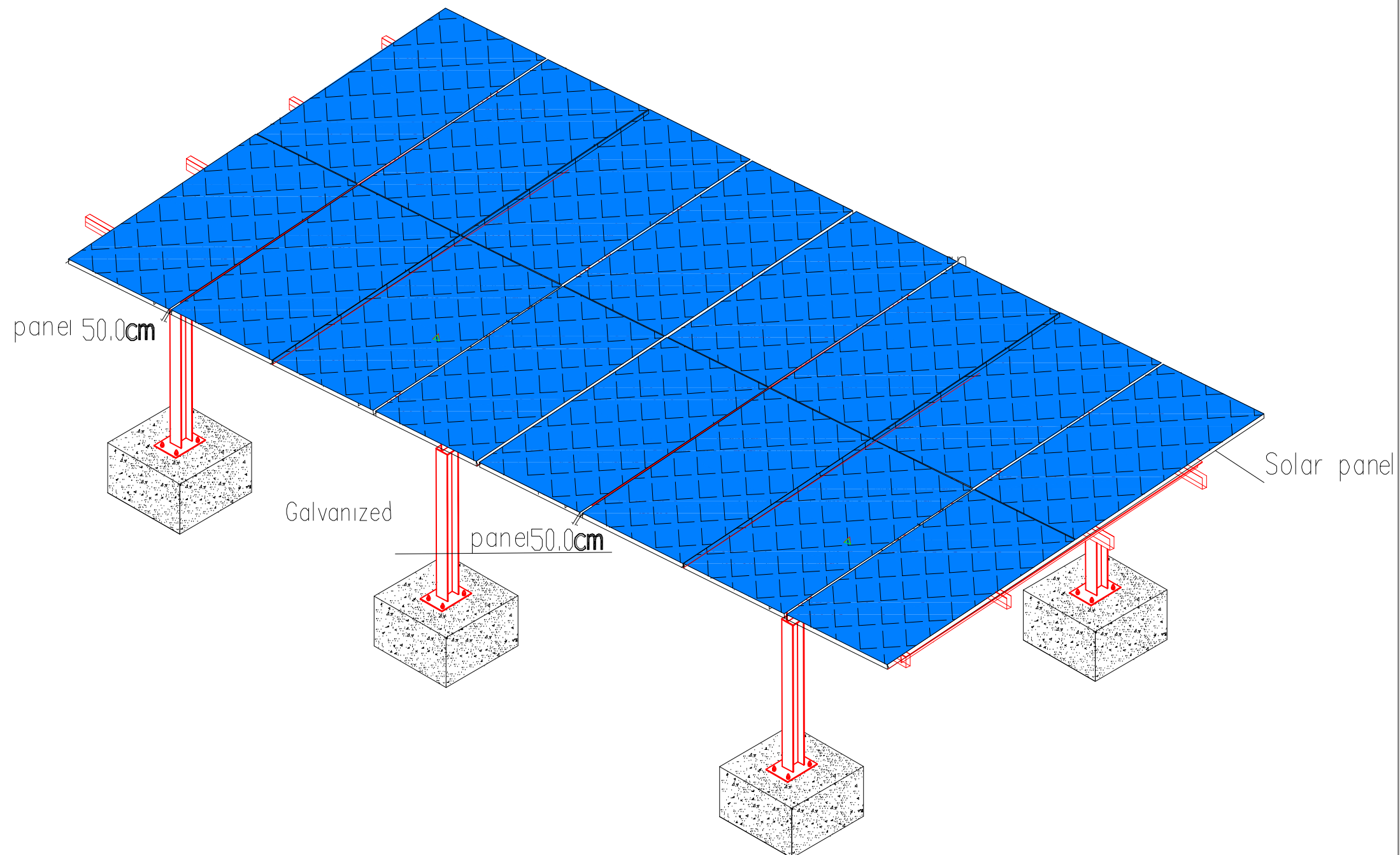
**PROJECT Name:**  
ECHO 3606PROJECT -Al Aqmah Solar  
System  
in Mawza District -Taiz Governorate

### Bases of panels

Designed by :	Sami & Aiman
Revised by :	Wathiq Al Asharafi
Checked by :	Moe Thandar Win
approved by :	Kuder Ajaj

**All of the mentioned above  
must to be approved from the  
Engineer supervisor**

**If any items isn't clear here  
it mentioned in BOQs**



**PROJECT Name:**  
ECHO 3606PROJECT -Al Aqmah Solar  
System  
in Mawza District -Taiz Governorate

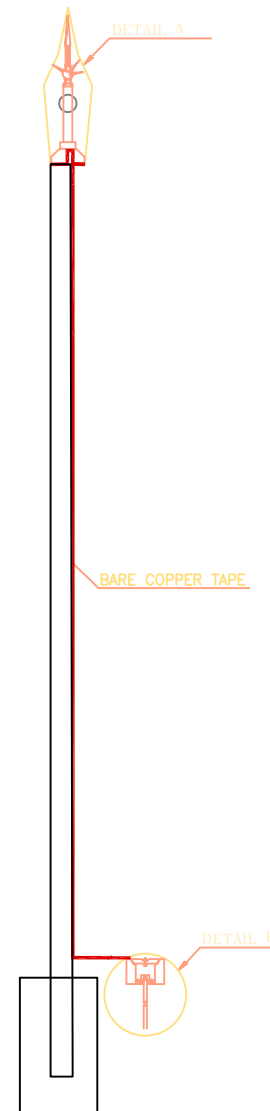
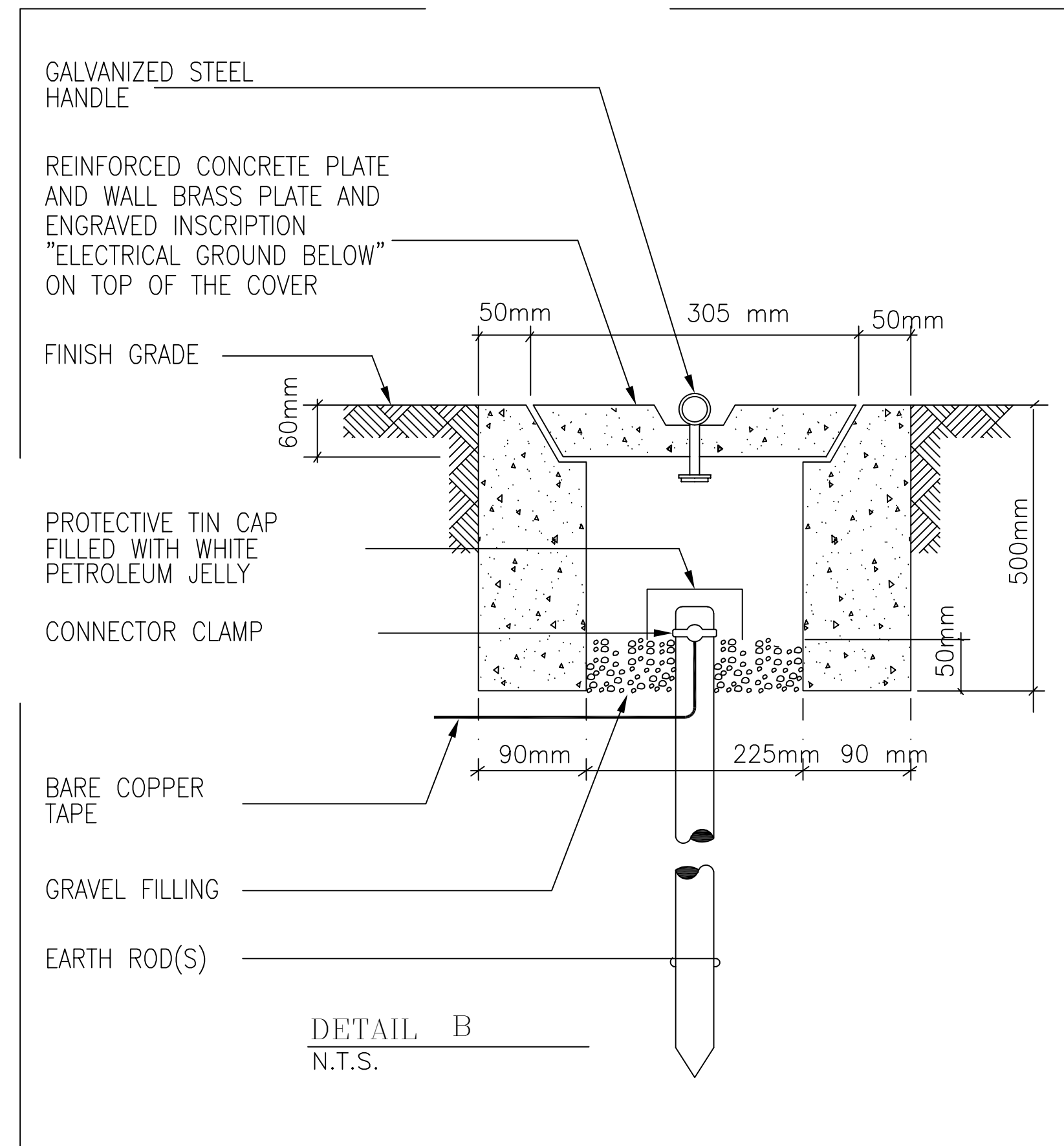
### Protect Lightning

Designed by :	Sami & Aiman
Revised by :	Wathiq Al Asharafi
Checked by :	Moe Thandar Win
approved by :	Kuder Ajaj

**All of the mentioned above  
must to be approved from  
the Engineer supervisor**

**If any items isn't clear  
here it mentioned in  
BOQs**

### DETAIL:-



**Protect Lightning**

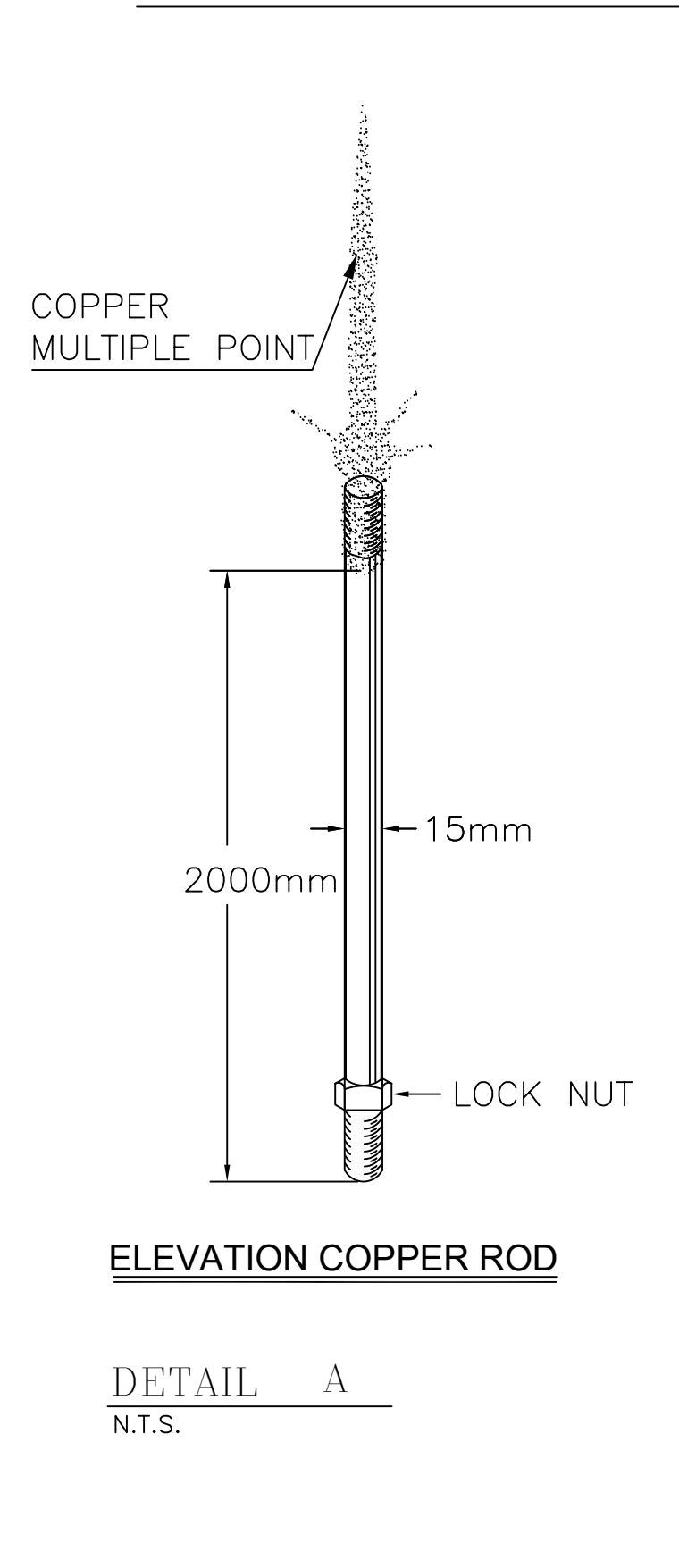
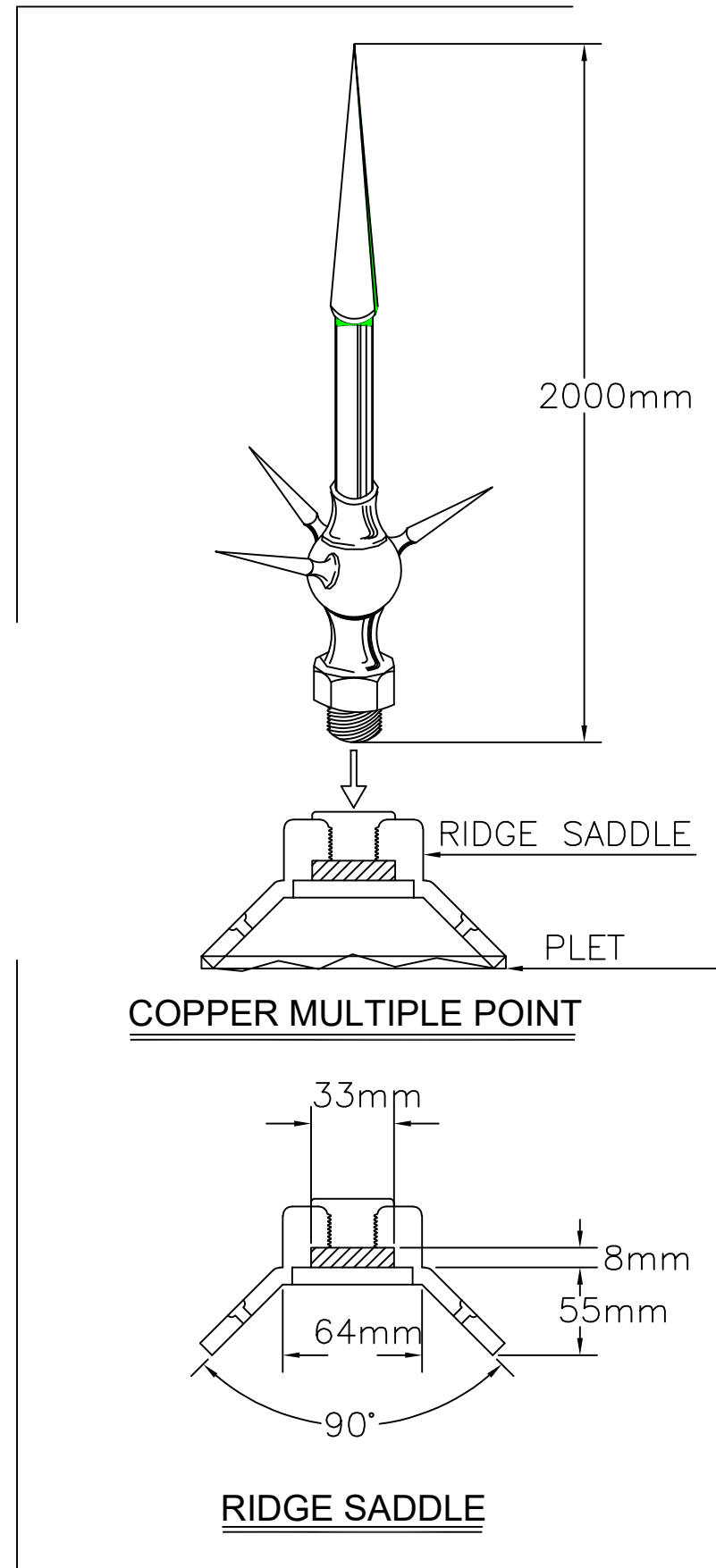
**PROJECT Name:**  
ECHO 3606PROJECT -Al Aqmah Solar  
System  
in Mawza District -Taiz Governorate

**Details of Items Protect Lightning**

Designed by :	Sami & Aiman
Revised by :	Wathiq Al Asharafi
Checked by :	Moe Thandar Win
approved by :	Kuder Ajaj

**All of the mentioned above  
must to be approved from  
the Engineer supervisor**

**If any items isn't clear  
here it mentioned in  
BOQs**



**Details of Items Protect Lightning**



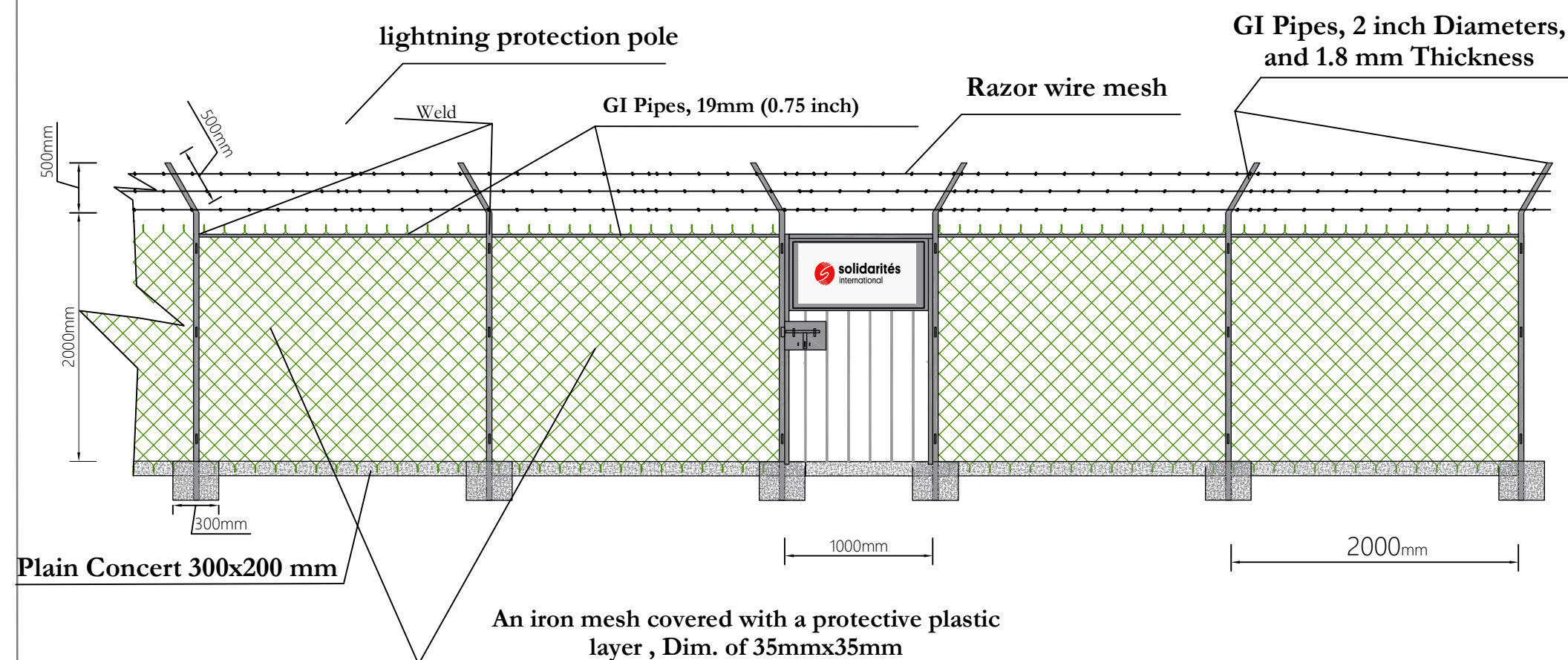
**PROJECT Name:**  
ECHO 3606PROJECT -Al Aqmah Solar  
System  
in Mawza District -Taiz Governorate

### Solar Protection Fence

Designed by :	Sami & Aiman
Revised by :	Wathiq Al Asharafi
Checked by :	Moe Thandar Win
approved by :	Kuder Ajaj

**All of the mentioned above  
must to be approved from  
the Engineer supervisor**

**If any items isn't clear  
here it mentioned in  
BOQs**



**Protection Fence**